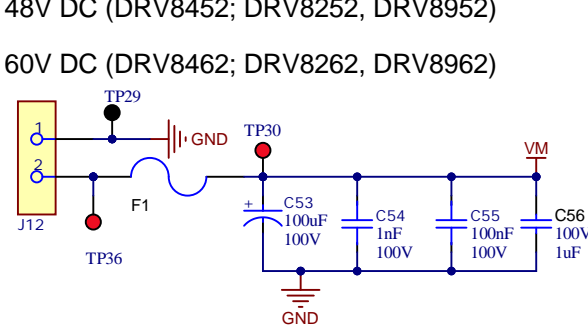


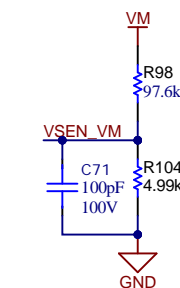
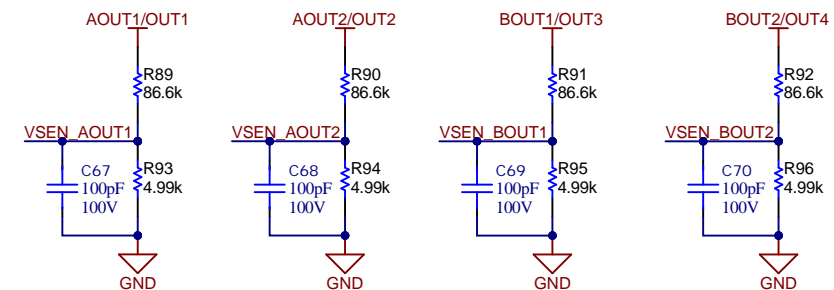
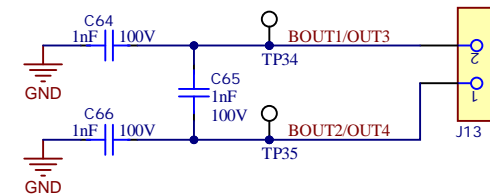
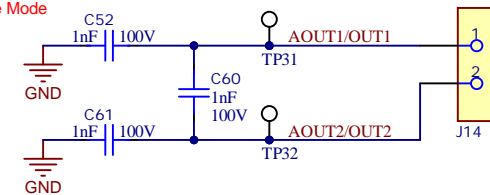
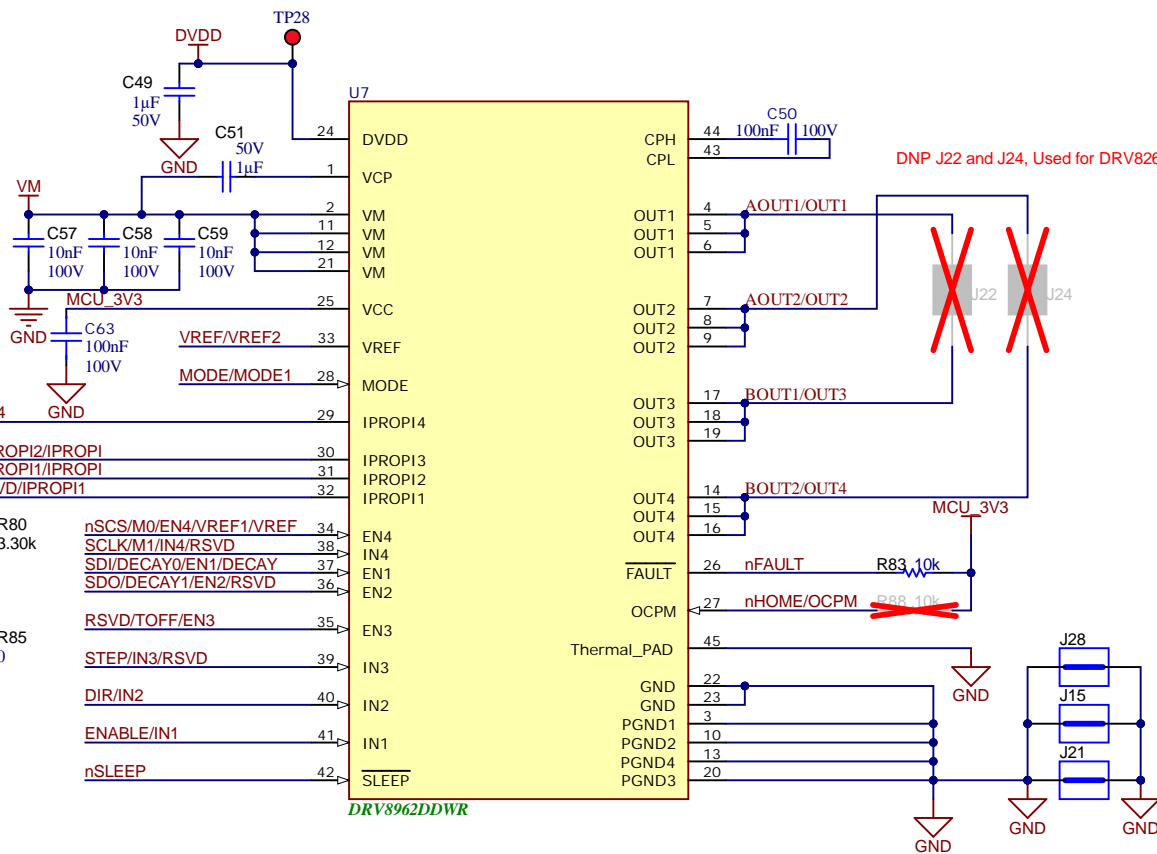
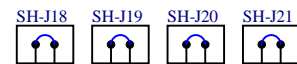
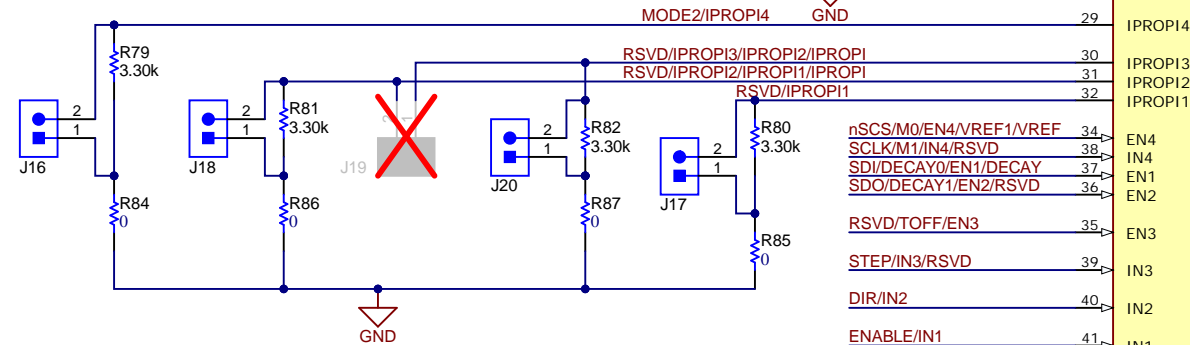
## Motor Driver

4.5 - 48V DC (DRV8452; DRV8252, DRV8952)

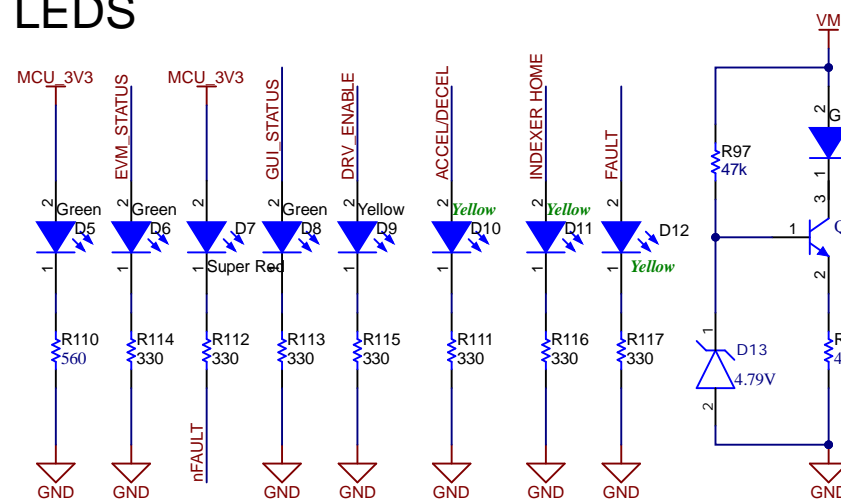
4.5 - 60V DC (DRV8462; DRV8262, DRV8962)



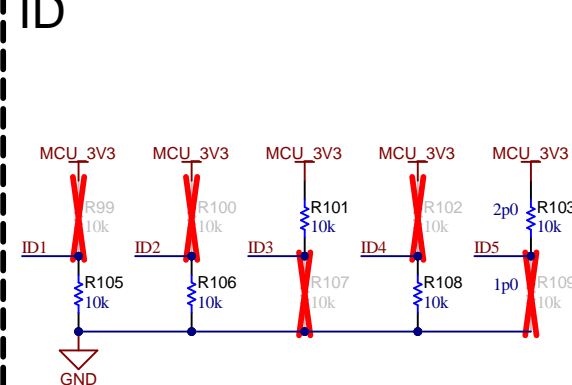
For DRV8962 and DRV8262 populate jumpers to disable current regulation



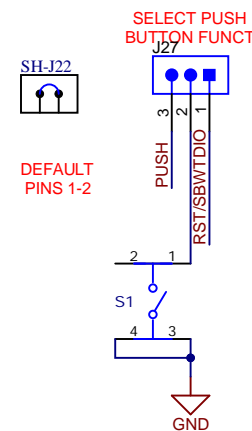
## LEDS



## ID



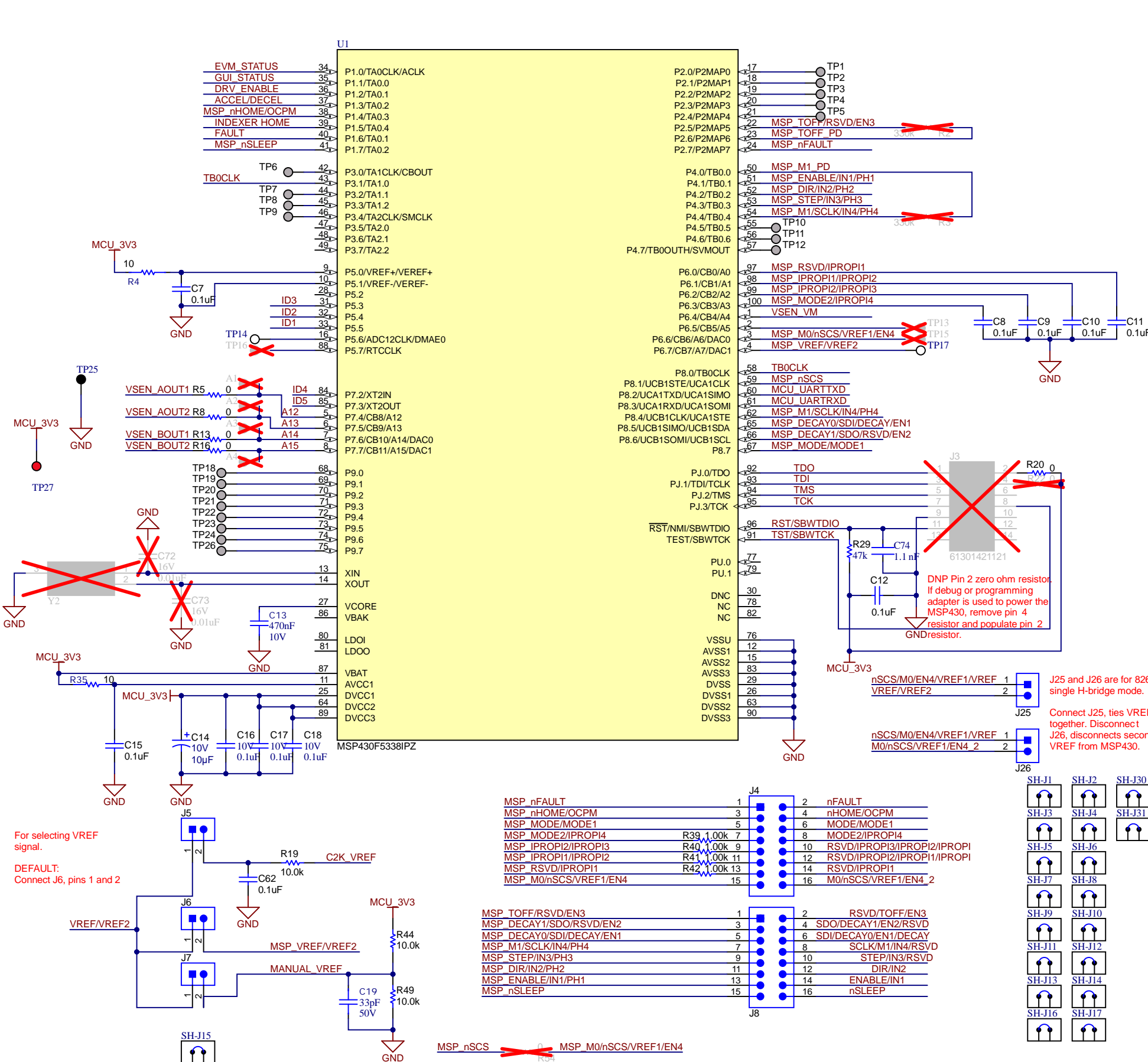
## BUTTON



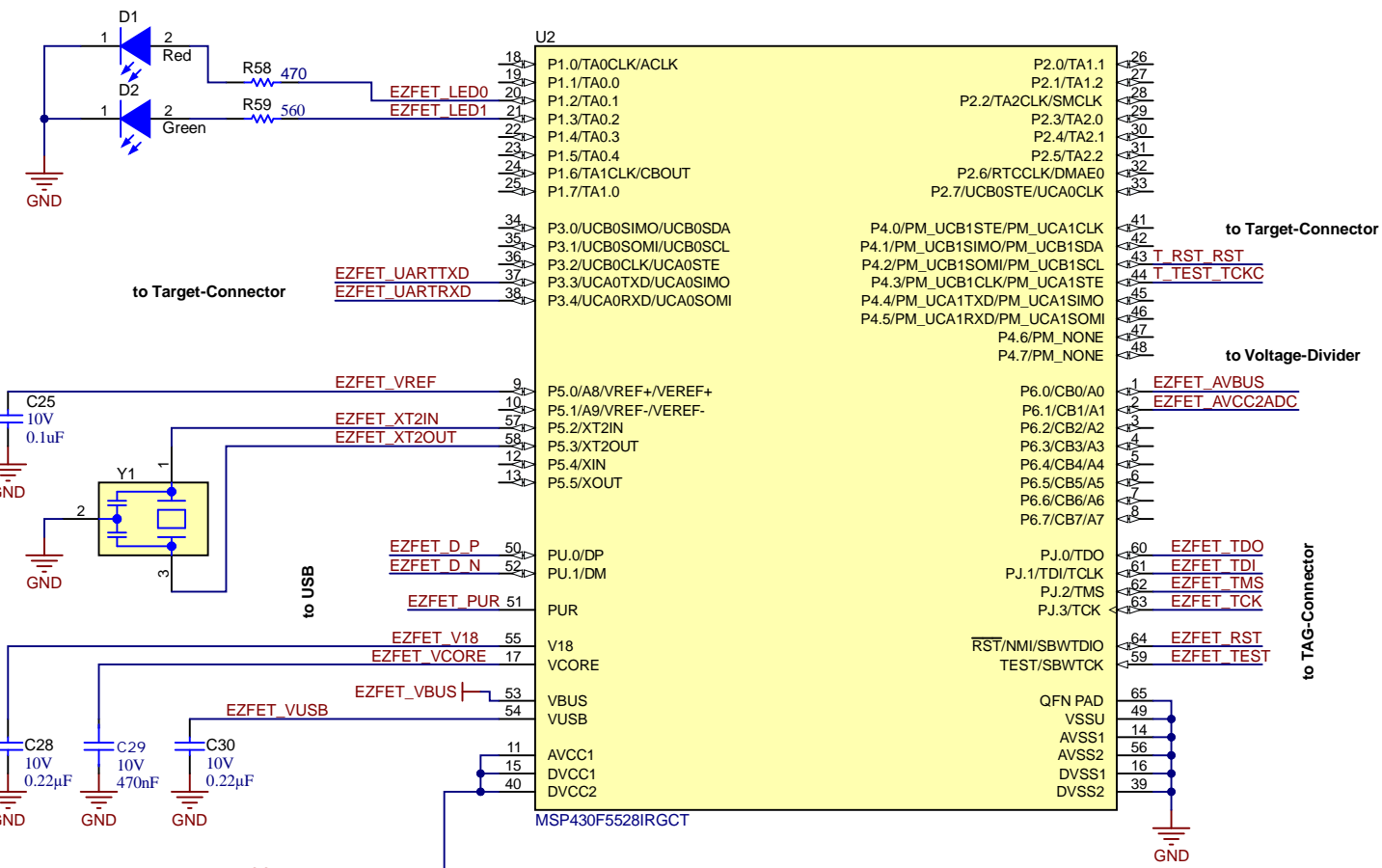
Orderable: <b>DRV8962EVM</b>	Designed for: <b>Public Release</b>	Mod. Date: 6/8/2023	 <b>TEXAS INSTRUMENTS</b>
TID #: <b>N/A</b>	Project Title: <b>DRV8452EVM</b>		
Number: <b>MD040</b>	Rev: <b>A</b>	Sheet Title:	
SVN Rev: <b>Not in version control</b>	Assembly Variant: <b>004</b>	Sheet: <b>2</b> of <b>3</b>	
Drawn By:	File: <b>MD040_Motor_Driver_RevA_SchDoc</b>	Size: <b>B</b>	
Engineer: <b>Pedro Arango Ramirez</b>	Contact: <a href="http://www.ti.com/support">http://www.ti.com/support</a>		<a href="http://www.ti.com">http://www.ti.com</a> © Texas Instruments 2022

## MSP430F5338

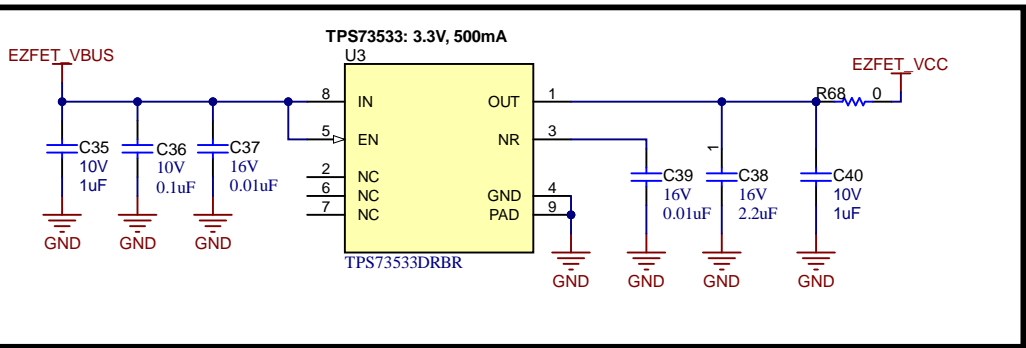
## C2000 (LAUNCHXL-F280025C) connectors



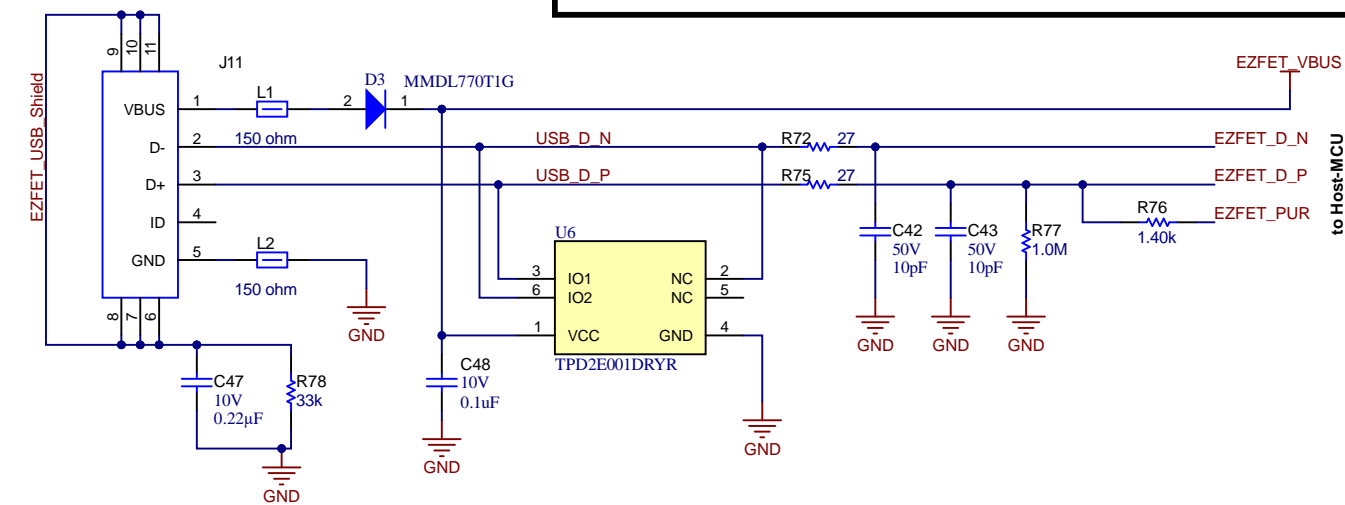
# Host MCU for Emulation



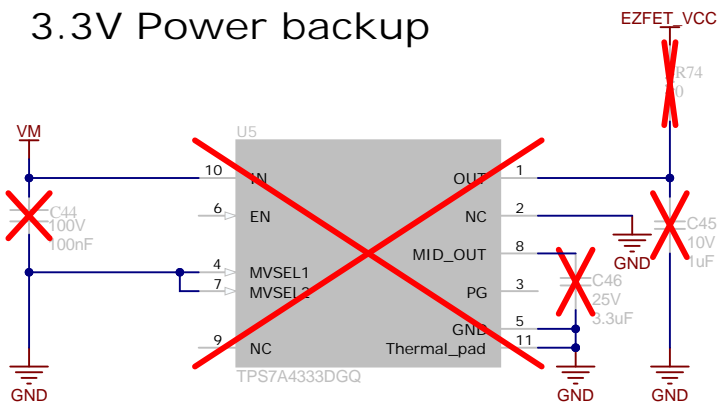
## 3.3V Power (EZFET\_VCC)



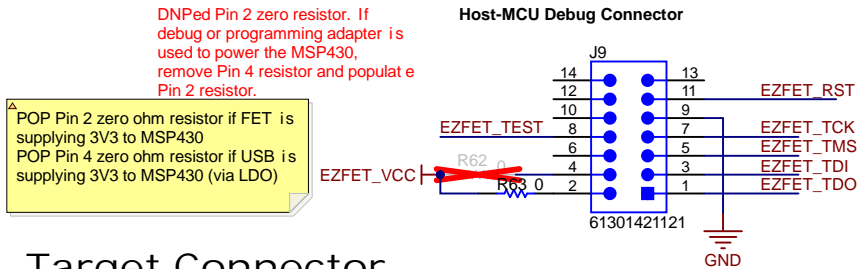
## USB-I-Interface



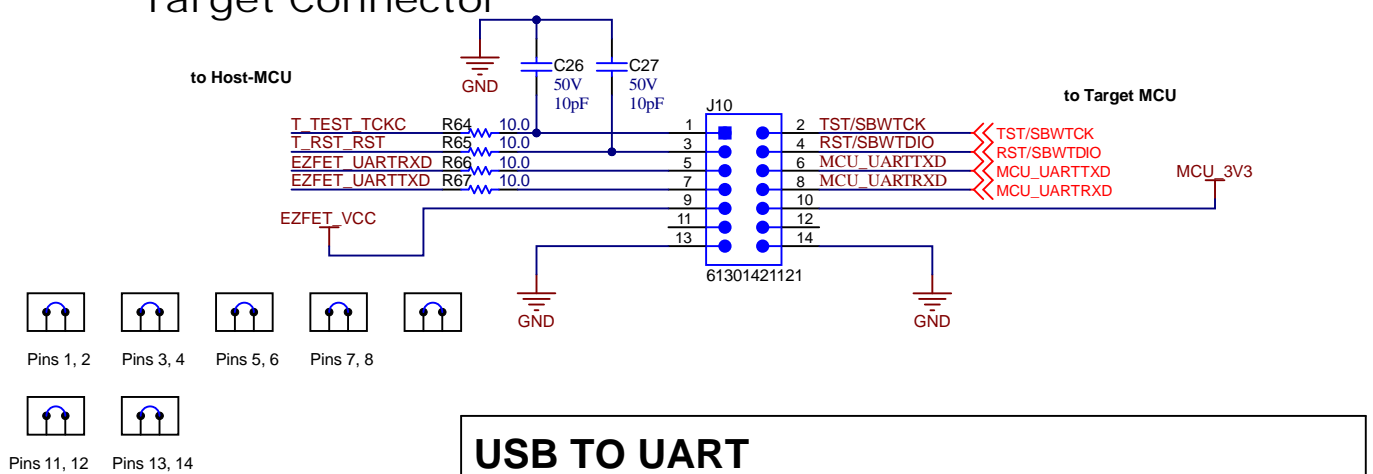
## 3.3V Power backup



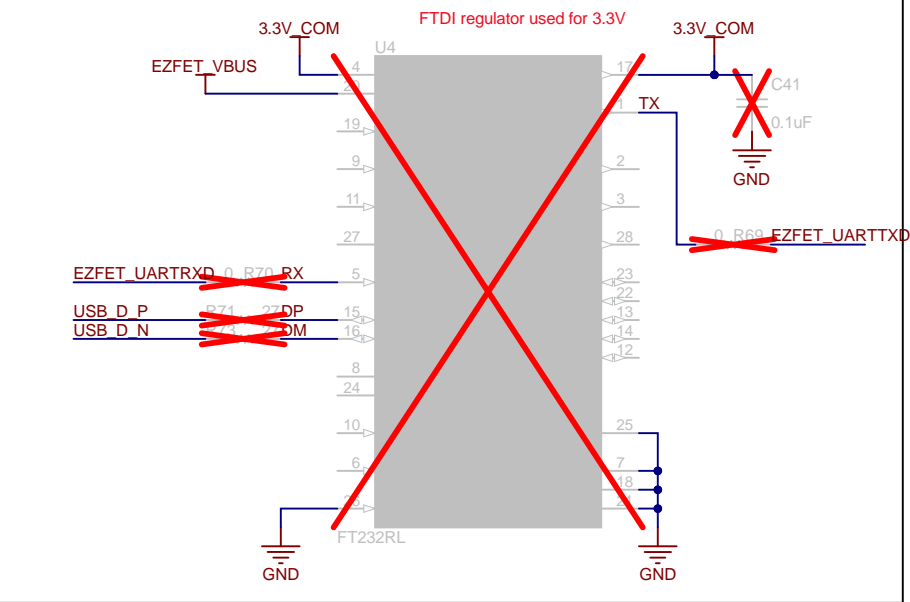
## JTAG-Connector (Host Debug)

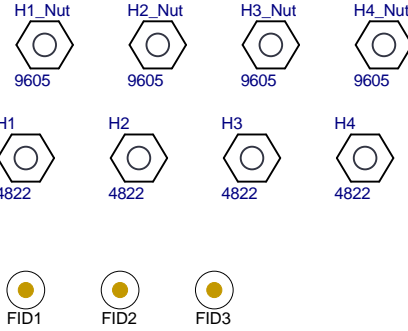


## Target Connector



## USB TO UART





PCB Number: MD040

PCB Rev: A

PCB

LOGO

Texas Instruments



PCB

LOGO

FCC disclaimer

PCB

LOGO

WEEE logo



PCB

LOGO

CAUTION. READ USER GUIDE BEFORE USE



LBL1

PCB Label

THT-14-423-10

Size: 0.65" x 0.20 "

ZZ1

Label Assembly Note

This Assembly Note is for PCB labels only

ZZ2

Assembly Note

These assemblies are ESD sensitive, ESD precautions shall be observed.

ZZ3

Assembly Note

These assemblies must be clean and free from flux and all contaminants. Use of no clean flux is not acceptable.

ZZ4

Assembly Note

These assemblies must comply with workmanship standards IPC-A-610 Class 2, unless otherwise specified.

Variant/Label Table	
Variant	Label Text
001	DRV8452EVM
002	DRV8462EVM
003	DRV8952EVM
004	DRV8962EVM
005	DRV8252EVM
006	DRV8262EVM
007	DRV8461EVM

Texas Instruments and/or its licensors do not warrant the accuracy or completeness of this specification or any information contained therein. Texas Instruments and/or its licensors do not warrant that this design will meet the specifications, will be suitable for your application or fit for any particular purpose, or will operate in an implementation. Texas Instruments and/or its licensors do not warrant that the design is production worthy. You should completely validate and test your design implementation to confirm the system functionality for your application.